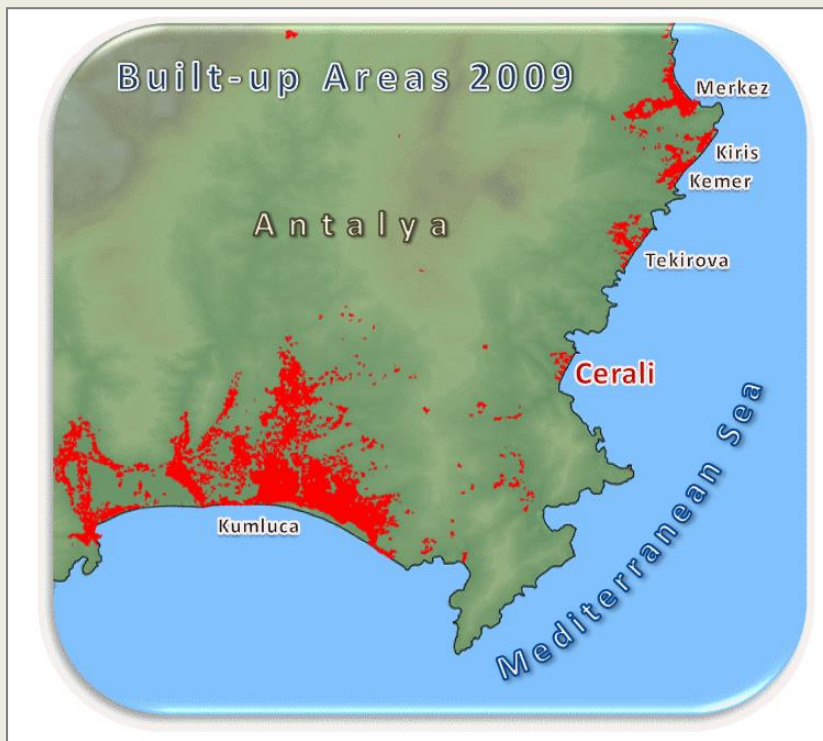


Degree of imperviousness



Source: GeoVille for EEA

Product description

- Inventory of built-up and industrialised areas and subsequent determination of changes

Spatial extent and resolution

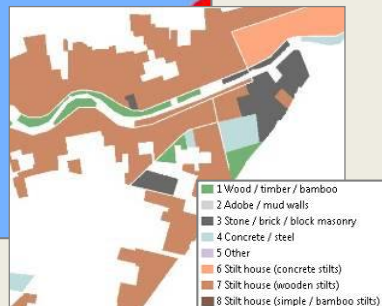
- Local to regional
- Meter scale

Benefits

- Permanent monitoring of built-up expansion and industrialisation patterns
- Identification of pressure on habitats

Settlement mapping (individual houses) & sealing cadaster

Land use with building & infrastructure inventory



Building material

Source: GeoVille for World Bank/ESA

Product description

- Individual buildings and houses, roads, trees, green urban areas and other small scale urban structures

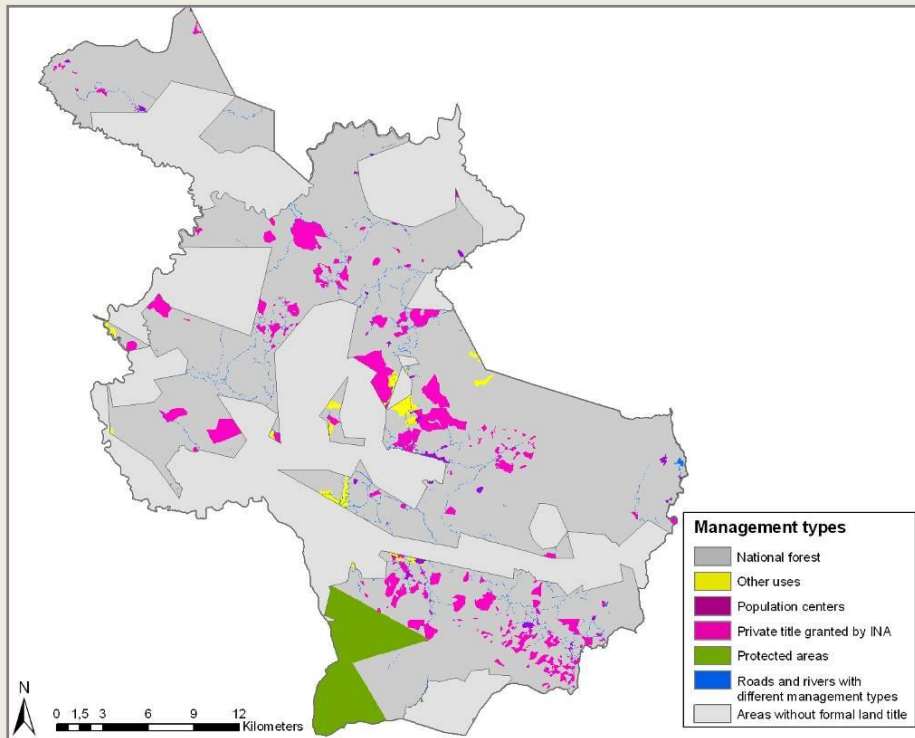
Spatial extent and resolution

- Project area and larger
- Meter scale

Benefits

- Detailed description and assessment of community location within a project area

Population centers and forest usage by management type



Source: GeoVille for World Bank

Product description

- Individual buildings and houses (> 25 km²), roads, trees, green urban areas and other small scale urban structures

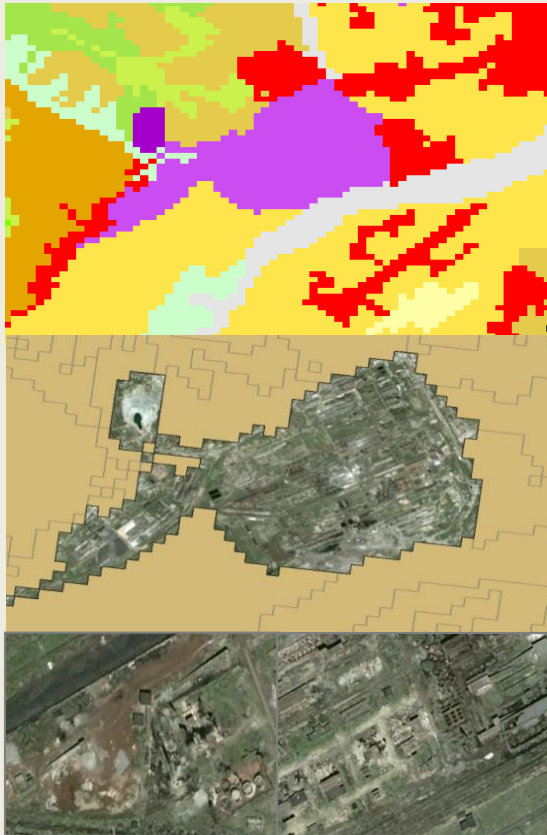
Spatial extent and resolution

- Local to regional/country wide
- Meter scale
- 1 ha Minimum Mapping Unit feasible

Benefits

- Geospatial explicit information

Industry distribution / activity



Source: GeoVille for EEA

Product description

- Location and type of industry

Spatial extent and resolution

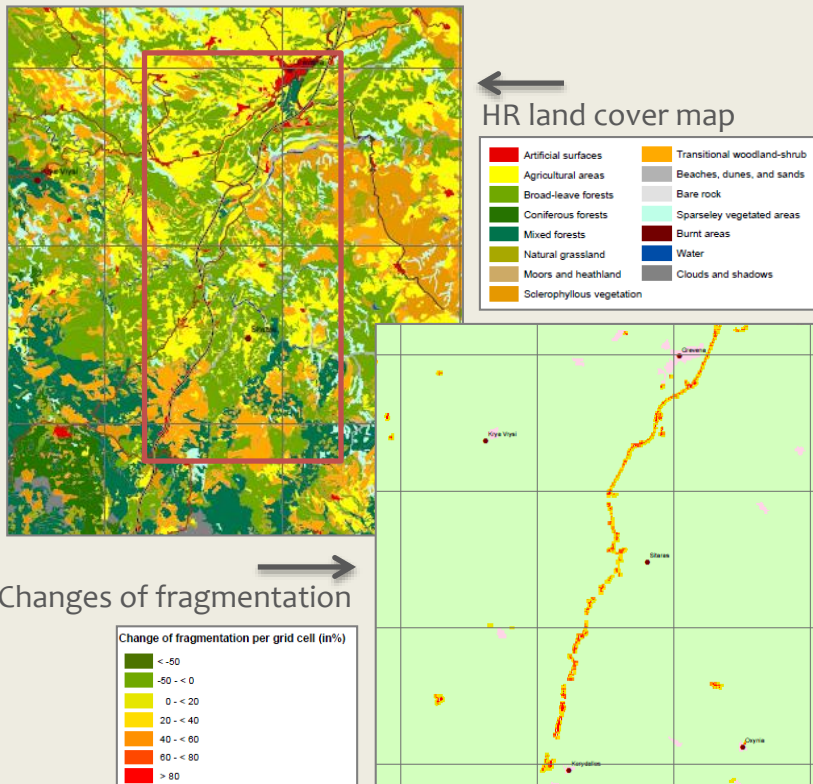
- Catchment scale and larger
- Metre scale

Benefits

- Detailed delineation of production plants and industrial activities

Fragmentation mapping

Source: GeoVille for EIB



Product description

- Basic information on the progress of the construction work and input for a fragmentation analysis

Spatial extent and resolution

- Catchment scale and larger
- Meter scale

Benefits

- Detection of road and track impact and potential expansion into protected areas