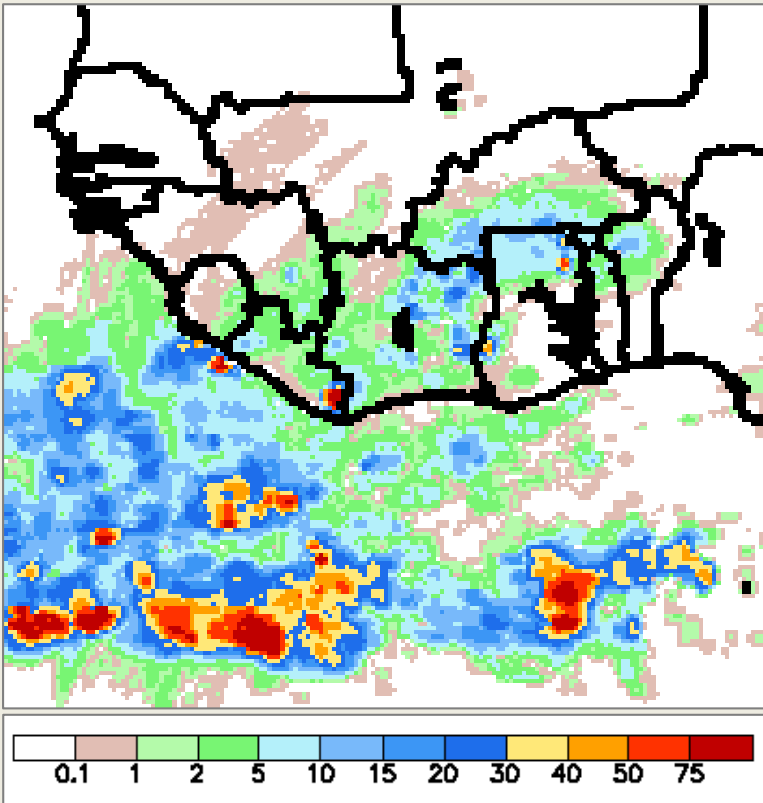


Rainfall Estimate (mm)



Product description

- Rainfall estimate (mm) based on satellite and station data

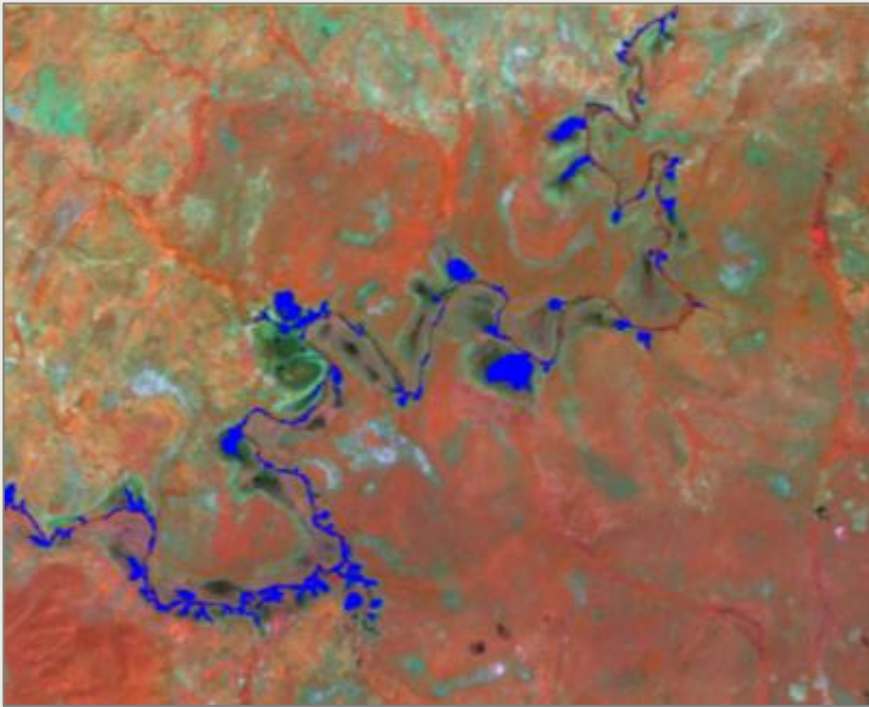
Spatial extent and resolution

- Regional
- Kilometre scale
- 10-day

Benefits

- Regional monitoring of rainfall patterns as input to water flow models

Water bodies



Source: GeoVille

Product description

- Detailed mapping and monitoring of open water bodies and their seasonal/man induced changes

Spatial extent and resolution

- Catchment scale and larger
- Meter scale

Benefits

- Monthly/seasonal monitoring of water bodies (water quantity) to determine levels of man made water extraction